



PTU 15/25 PV

CJC® Filter Separator - DIESEL

Product Sheet

APPLICATION

The CJC® Filter Separator PTU 15/25 PV Diesel is used for light distillates i.e.:

- marine diesel (MDO)
- marine gas oil (MGO)
- marine special distillates (MSD)

The PTU 15/25 PV is ideal for **separation of water, removal of particles and degradation products.**

FUNCTION

The filter pump draws oil from the settling/bunker tank and presses it through the filter insert. From the centre of the insert the oil flows down into the coalescer housing where water droplets adhere to the coalescer element. Here larger drops will form and settle in the bottom of the coalescer housing. From the top of the coalescer housing the oil will flow to the service tank or back to the settling/bunker tank.

The filter suction pipe should be connected to the bottom of the settling/bunker tank, above the tank drain tap. The filter outlet should lead to the service tank.

An overflow line from the top of the service tank back to the settling tank should be applied in order to secure that surplus oil flows back to the settling/bunker tank.

THE FILTER PUMP

The filter pump is a CJC gear wheel pump. The electric motor can be supplied for all standard AC and DC voltages.

FILTER INSERT

The CJC® Filter Inserts consist of several discs bonded together. The material is wood cellulose.

OPTIONS

- Preheater
- Control box
- Drip pan
- Tank

FILTRATION ABILITY

• Water Removal by Separation

The CJC® Filter Separator removes water from oil to very low levels. The efficiency of water removal depends on the oil type and temperature.

• Particle Removal

All CJC® Filter Inserts have the following filtration degree:

- 3 µm absolute:

98.7% of all solid particles > 3 µm

- 0.8 µm nominal:

50% of all solid particles > 0.8 µm

are retained in each pass.

The dirt holding capacity is 1.5 litres of evenly distributed solids.

• Degradation Products

Oxidation products, resin / sludge, and varnish are retained by the cellulose material, which will retain appr. 1 kg of oil degradation products.

Preheating the oil before filter pass may be necessary to prevent segregation of paraffin, but only with blended fuels.



The CJC® Filter Separator
PTU 15/25 PV

TECHNICAL DATA

Model		PTU 15/25
Pump flow, per hour (std.)	ltr/gal	45-120 / 12-32
Pump type		PV2
Pump inlet pressure, max.	bar/psi	0.5 / 7
Filter Insert 15/25, std.:	pcs.	1
Power consumption, aver.	kW	0.18
Pressure drop, max.	bar/psi	1.8 / 26
Oil temperature, max. *)	°C / °F	60 / 140
Dirt holding capacity, appr.	ltr/gal	1.5 / 0.4
Water reservoir capacity	ltr/gal	1.25 / 0.33
Dry weight	kg/lb	37 / 82
Operating weight, wet	kg/lb	47 / 104
Design pressure, filter	bar/psi	4 / 58
Ambient temperature, max.	°C / °F	40 / 104
Water discharge		Manual

*) The standard filters are designed for a max. temp. of 60°C / 140°F
Other conditions, please contact us.

APPLICABLE FILTER INSERTS

Type	Application for
F:	Light distillates (MDO, MGO, MSD)



PTU 15/25 PV

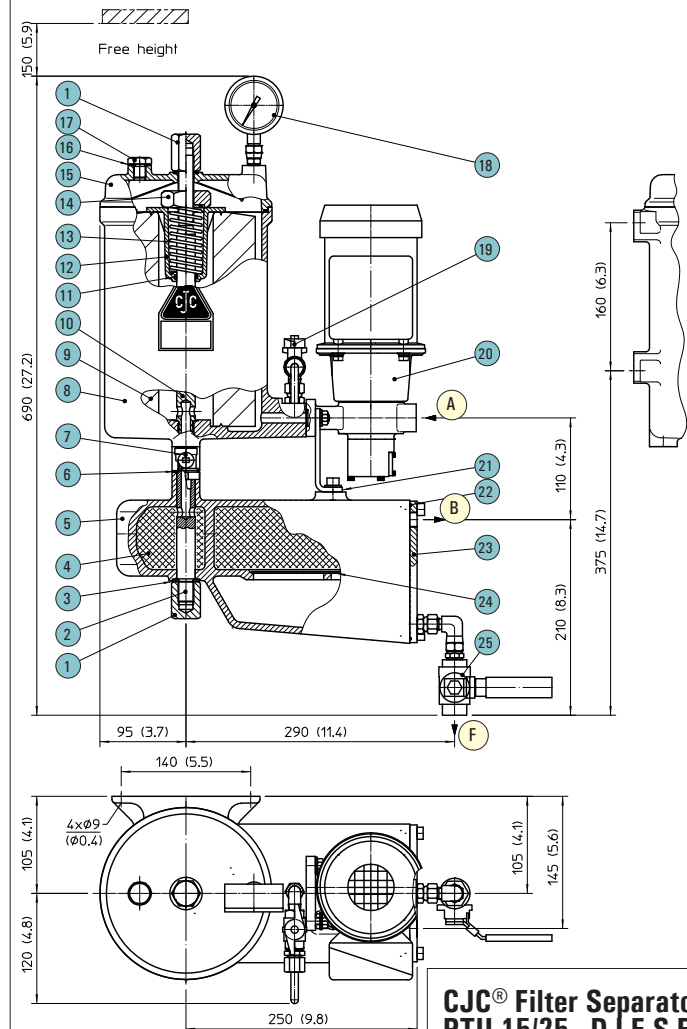
CJC® Filter Separator - DIESEL

Product Sheet

COMPONENTS

Item	Part
1	Nut
2	Stay bolt
3	Bonded seal
4	Coalescer element
5	Coalescer housing
6	Bonded seal
7	Drain valve
8	Filter housing
9	Filter insert
10	Stay bolt
11	O-ring
12	Spring guide
13	Spring
14	Nut
15	Cover
16	Bonded seal
17	Vent screw
18	Pressure gauge
19	Sampling point
20	Pump
21	Bracket
22	O-ring
23	Cover
24	Sieve
25	Shut off valve
A	3/8" BSP, Oil inlet
B	3/8" BSP, Oil outlet
F	1/4" BSP, Water outlet

DIMENSIONS



**CJC® Filter Separator
PTU 15/25 - DIESEL**
44 009 12-4
Measurement in mm (inches)

INSTALLATION PRINCIPLE

